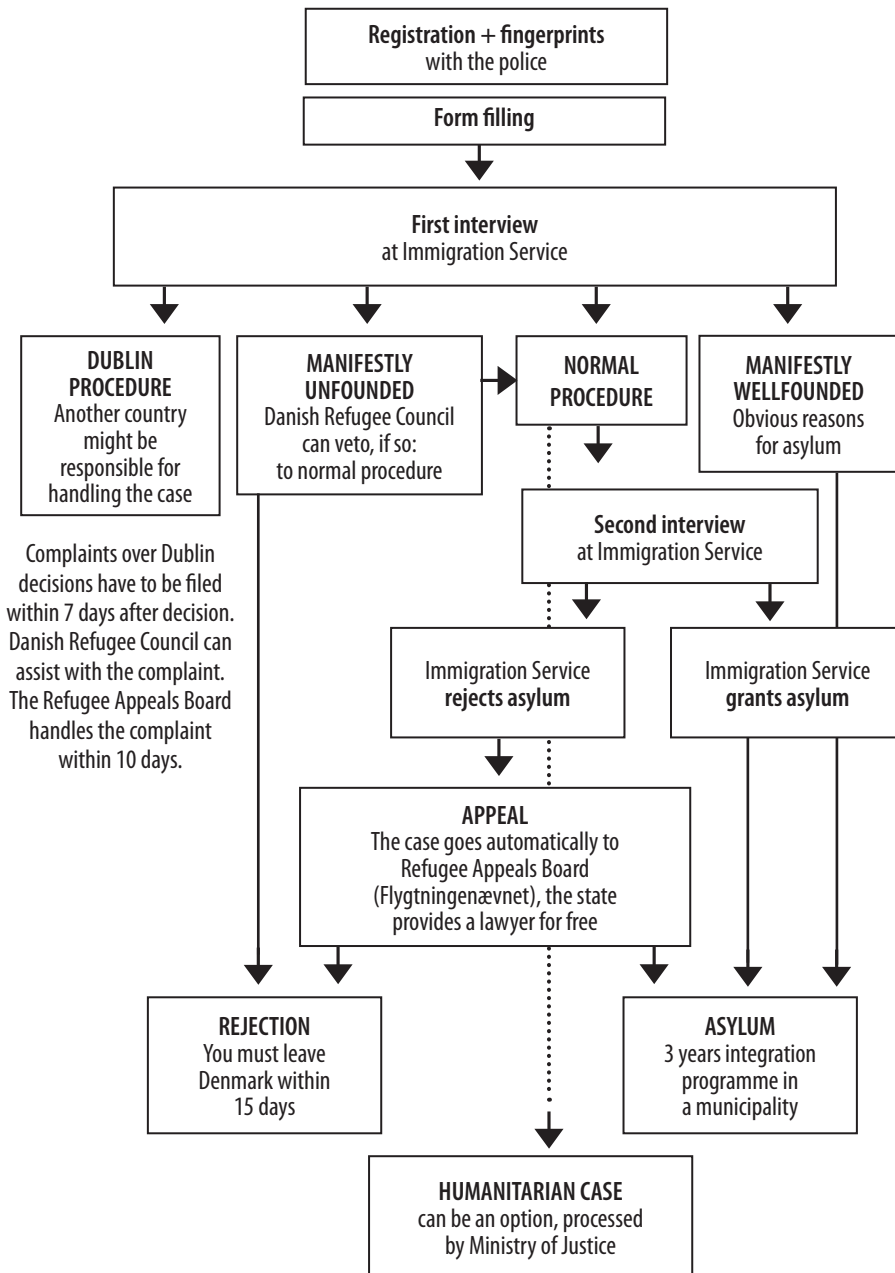


THE ASYLUM PROCEDURE IN DENMARK



PHASE 1:

No pocket money
No internship (praktik)
Reception Center Sandholm

PHASE 2:

Move to residence camp
Pocket money
Internship (praktik) + language training

After 6 months (if you sign the voluntary return contract):

Right to work/study
Access to live outside camp

PHASE 3 (if you are rejected and do not cooperate):

Move to deportation camp Sjølsmark or Kærshovedgård
No pocket money
No internship (praktik), study or work
Risk of closed camp
Weekly meetings with police

REFUGEESWELCOME
Legal advice and advocacy Denmark

ENGLISH

GENERAL INFORMATION AND ADVICE TO ASYLUM SEEKERS

Refugees Welcome is a small, independent organisation. We all work without pay to help refugees in Denmark.

The information in this leaflet is short and general. For more precise and specific advice, please contact us in person.

www.refugeeswelcome.dk

GOOD ADVICE

NEWCOMERS:

- Draw a time line for your life before form filling/interview. Place all important events on it, make notes of details (names, places, dates).
- Fill out the asylum form in detail, give *all* relevant information from the beginning, don't change your story. Write in English if you are fluent in this.
- Forget advice/warnings from agents or friends! Your best chance is to tell the truth and trust the authorities.

Interview, Immigration Service:

- Ask for another interpreter if he/she is not perfect in your language. If not granted, make sure they note that you are not satisfied.
- Ask for an English translator if you speak it fluently.
- Check for interpretation errors/misunderstandings before you sign (try with alternative words).
- Ask for female/male interviewer in advance if relevant for your case.
- Mention asylum motive for your children if they have one.
- Answer questions precisely. If you want to add things, do it afterwards.
- Sign the voluntary return contract – you can always change your mind later.

Health problems:

Inform about these from the start and get treatment.

Refugee Appeals Board:

Choose your own lawyer and trust him/her (ask Refugees Welcome for recommendations).

In general:

Be active all the time, take part in everything you can, make Danish friends.

REJECTED:

• To reopen your case at the Refugee Appeals Board

(takes 15 months, average) **you need:**

- 1) New important information, not available at the time of the rejection and not previously presented to the board
- 2) Proof of something that the Board did not believe
- 3) Radical change of the situation in your home country or
- 4) Change of practice in the Board for cases similar to yours.

Very few cases are reopened.

• International/European complaint (takes up to 2 years):

If a lawyer/Danish Refugee Council/Refugees Welcome agree that the case is a wrong decision and it has a chance in one of these systems.

• Humanitarian residence permit:

Only for people who are seriously ill and for which treatment is not available in their home country. You need documentation from doctors.

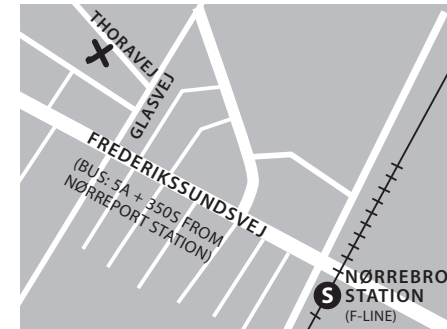
• Marriage:

Usually you need a valid passport and you have to apply from your home country. Ask Refugees Welcome or a lawyer for detailed advice.

If none of these are possible:

Best option is to sign the form for voluntary return, and make a plan B for your return. If not, you will risk being sent to prison and deported. It is not possible to seek asylum in another EU member state, as you will then be sent back to Denmark as according to the Dublin regulation.

FOR PERSONAL ADVICE:



Refugees Welcome in Trampoline House

Thoravej 7, 2400 Kbh NV
Tuesdays 16-19.

Bring all your papers, and your own translator if you have one.

Phone 50558011

e-mail: kontakt@refugeeswelcome.dk

Facebook: Refugees Welcome, Denmark

Dansk Flygtningehjælp (Danish Refugee Council)

Borgergade 10, 1300 Copenhagen.
Wednesdays 10-13.

Phone every weekday 9-15: 3373 5000

e-mail: advice@drc.dk

FOR MORE INFORMATION:

Official website, Immigration Service:
www.nyidanmark.dk (also in English)